
Light of Christ Community Garden

Project Statement

DOCUMENT NUMBER:

LOCCG004

RELEASE/REVISION:

New

RELEASE/REVISION DATE:

26 July 2011

CONTENT OWNER:

Jim Cox

Light of Christ Lutheran Church, Care Ministry

Document Information

Version	Date	Description
1.0	10 May 2011	Initial release
1.1	23 June 2011	Minor revisions for general distribution
1.2	26 July 2011	<ul style="list-style-type: none">• Change title of Federal Way Gardens Foundation• Updated organization chart

Credits: Project Management techniques and methodologies are based on training received from The Boeing Company with documentation templates based on Macroscopic®, an integrated suite of business and IT methods developed by the Fujitsu Corporation.

Table of Contents

Executive Summary	4
Overview	4
Project Deliverable.....	4
Schedule and Cost	5
Project Description	5
Project Overview	5
Project Background	5
Project Context.....	6
Project Objectives.....	6
Project Success Criteria and Factors.....	7
Success Criteria	7
Project Conditions	7
Assumptions.....	7
Constraints	8
Known Risks.....	8
Known Issues	8
Project Profile.....	8
Project Characteristics.....	9
Solution Characteristics	9
Project Scope.....	9
Work Breakdown Structure	9
Project Scope Exclusions	10
Relationship with Other Projects.....	10
Project Overall Plan.....	10
Project Strategy and Approach	10
Methodology.....	10
Deliverable Review and Approval Process	11
Quality Control Process.....	11
Risk and Issue Management Process.....	11
Communication and Reporting Process.....	11
Project Organization Chart.....	12
Roles and Responsibilities.....	12
Key Resources (External).....	12
Project Overall Budget.....	13
Summary of Effort (In Work)	13
Summary of Cost (In Work)	13
Project Overall Schedule	13
Overall Schedule (In Development)	13
Major Milestones	13
26 July 2011	
Project Statement	3

Executive Summary

Overview

The Light of Christ Community Garden Project is a community outreach program of the LOC Care Ministry Team to minister to the others regarding our faith and our church. It is the mission of the Light of Christ Lutheran Church to reach out to others in the area in the spirit of fellowship, cooperation, community and cooperative identity and help those who are less fortunate.

The Federal Way Community Garden Foundation, is an existing project in our community, the purpose of which is to bring the community together to create and maintain a garden that will provide organic vegetables and fruit for citizens in need. As our goals are very similar it is proposed that we will associate with this opportunity.

The Light of Christ Community Garden Project is a large project that demands resources outside the Light of Christ Congregation. It is expected that various groups such as several Federal Way churches, social and business organizations and interest groups will be involved.

Project Deliverable

The primary goal of the project is the journey of building the community garden that is, reaching out with God's grace to help people know, trust and share God's purpose for their life. The community garden is the result of the project and of people working together toward a common goal. The intent of the garden is in helping needful people of our community with healthy food for their bodies and a beautiful place to work the soil and refresh our souls.

The Light of Christ Lutheran Church will have the primary responsibility for the LOC Community Garden project. This primary responsibility includes project initiation, oversight, regulation, organization and responsibility for the various community organizations that will support of the LOC Community Garden Project.

The church will provide the land, electricity and water for the community garden which will be approximately 100' x 100' of raised vegetable beds, flower gardens, fruit trees, a bee colony, central fountain areas with benches on which to sit, relax and enjoy the garden area. It is anticipated that the garden will provide an annual harvest of at least 7,000 pounds of organic fruits and vegetables, distributed without charge to our needful neighbors.

Schedule and Cost

The Light of Christ Community Garden will be modeled after the Federal Way Senior Center Community Garden which is of similar size and complexity. The Senior Center Garden cost approximately \$30,000 to build, and about \$1,500 per year to maintain. The dollar costs can be offset by in kind and service donations, such as equipment rental, gravel, wood, soil, etc.

The general schedule is as follows:

- Project initiation, approval and setup: 2/2011 – 6/2011
- Phase 1 Garden Build: 7/2011 – 10/2011
- First Planting: 4/2012
- First Harvest: 5/2012
- Phase 2 & 3, Parking Lot & Caretaker's Shack – TBD 2012?

Project Description

Project Overview

Project Background

The Light of Christ Lutheran Church has been blessed with a healthy and capable congregation that has a history of reaching out to those in need. In 2001 the church bought property adjacent to the church building in the hopes of expanding the mission of the church. As of this date, the property remains undeveloped toward the mission goals.

The community of Federal Way, WA consists of many civic and religious groups, professional organizations and businesses that want to provide care to our community's less fortunate. The need in the community is great.

The Light of Christ Lutheran Church has the mission, the land, and the ability to address this opportunity. The Federal Way Community Garden Foundation has established a blueprint for creating a community garden to grow organic fruits and vegetables.

The opportunity exists for the Light of Christ Lutheran Church and the Federal Way Community Garden Foundation to team together to provide a community garden.

Light of Christ Mission Statement

To reach out with God's Grace to help people know, trust and share God's purpose in their life.

Federal Way Community Garden Mission Statement

The Federal Way Community Garden will bring the community together to create and maintain a garden that will provide organic vegetables and fruit for citizens in need.

Project Context

This is a community outreach project of the Light of Christ Lutheran Church Care Ministry. It is intended that this project be closely associated with and included in the Federal Way Community Garden Foundation. The focus area for this garden is west of US RT 99, and South of 320th Avenue in Federal Way, and includes areas of N.E. Tacoma.

This project is dependent on other groups within Light of Christ Church such as the Office of the Pastor, Fellowship, TGIF, etc. Community support outside of the Light of Christ Church including volunteers, financial and in kind contribution will be solicited from other religious institutions, community and social groups, businesses, and neighbors in the focus area.

Project Objectives

Lead the community in developing a community garden approximately 100' x 100' in size, along with the supporting infrastructure, including water, electric, food distribution and maintenance.

It is anticipated that between 7,000 and 10,000 pounds of organically grown fruits and vegetables will be made available to needful persons in Federal Way and N.E. Tacoma.

Stewardship

The Light of Christ Lutheran Church has been given the stewardship of additional church property. We need to make use of this property and multiply the opportunity as demonstrated in the parable of the "Talents" Mt. 25: 14 – 30. The church, as a member of the Federal Way community, also has the responsibility of being a good neighbor, maintaining and enhancing the property that is now unsightly and overgrown.

Outreach

It's very common in today's society to feel lonely, isolated and left out. In this era of digital connectivity and scripted activities many have overlooked the benefit that can be derived by talking with one other and working together toward a common goal of helping others. This isolation leads to a myriad of problems such as prejudice and distrust. The church can be a conduit to knit the

community, facilitate communications, and build foundations of trust, acceptance and empathy. It is said that “While Isolation Kills, A Community Heals”.

Caring for Others

There are members of our community who need healthful food, in many cases just to survive. For example, The Food Lifeline in Shoreline has seen a 24% increase in people using the food bank overall. The food bank is also seeing a new trend more working people and families, who don't qualify for food stamps, need their help. "We're now seeing in King County, for example, 44 percent who are visiting food banks make too much to receive food stamp help. It has been reported that 14.8% population of State of Washington is in food crisis.”

Project Success Criteria and Factors

Success Criteria

Success Criteria	
Community Outreach	Community garden to be completed by 4/2012
Community Ownership	No more that 15% of the cost of the garden comes from one organization
Garden Productivity	Produce at least 7,000 pounds of organic fruits and vegetables
Providing for needful	Establish regular schedule for distribution of produce to needful

Project Conditions

Assumptions

- The congregation of the Light of Christ Lutheran church will support the Care Ministry Community Outreach Project with prayer, time, talent and treasure.
- The land and buildings bordering 21st avenue can be used to build the garden.
- The Federal Way Garden Foundation will provide counsel and support on major key areas such as Master Gardener, finance, volunteers, communications, distribution etc.

Constraints

- City permits to clear sufficient land including removal of some trees.
- Lack of, or delayed community involvement may extend project completion

Known Risks

Known Risks	
Risk 1	
Statement:	Project will require substantial, long term commitment on behalf of LOC congregation
Responses:	The FW Community Garden Foundation does not require specific time duration. The ongoing maintenance of the garden is manageable with limited resources.
Risk 2	
Statement:	Project will have high visibility in community, once committed to project LOC will need to follow through to completion
Responses:	This is a community project, not only the responsibility of the LOC Church but the community as a whole
Risk 3	
Statement:	Location on 21 st avenue more open to vandalism
Responses:	Certain security elements can be incorporated into the architecture design. It is also hoped that being a community project with community ownership will help mitigate the risk.
Risk 4	
Statement:	Fund raising difficult in current financial times
Responses:	We will work with the FW Community Gardens Foundation on major fund raising efforts to help alleviate the problem of community saturation. Being a community project may also help to address these concerns.

Known Issues

Known Issues	Action taken	Deadline for taking action
Issue – 1: (Closed) Approval by FW Community Garden Foundation	Met with the Foundation Chairperson. Will take forward to Board of Directors with recommendation to approve. Action: Approved by Foundation Board of Directors	5/14 /2011
Issue – 2: (Closed) Approval by LOC Voters Approved by LOC Voters	Met with LOC Governing Board. Approval to proceed. Recommend voters to accept.	6/12/2011
Issue – 3 (Open) Staffing of Leadership Positions	Advertising need to LOC Congregation. Meeting with church and civic groups.	7/31/2011 – Construction Start

Project Profile

The concept of a community garden on the Light of Christ extended property has been well received by the congregation and governing board during the initial

stages. We have been able to staff some key positions; however a majority of the leadership positions remain unfilled. This is somewhat of a concern as it may put additional workload on the existing leadership positions and extends completion of the project.

The Federal Way Community Gardens Foundation is continuing to develop their role as the community garden concept matures. The Light of Christ Garden is the first large garden project to be affiliated with as opposed to being sponsored by the Garden Foundation. Working relationships and formal agreements continue to be developed.

Project Characteristics

The Light of Christ Community Garden will be of similar size and design as the Federal Way Senior Center Community Garden.

Solution Characteristics

The LOC Community Garden is a “Community Garden” project as opposed to a “Pea Patch” concept. The LOC Community Garden will not sell or rent beds or plots for individual use. All beds / plots are used to for the general good.

Project Scope

The scope of this project is limited to the community outreach program to build a garden complex. This effort is sponsored by the Light of Christ Care Ministry Team.

Work Breakdown Structure

All work will be performed on a volunteer basis. There are no “paid” positions per se. Work will be divided up into various teams to be able to concentrate on particular focus areas assignments. Teams and leadership roles will report to the Project Manager who in turn, reports to the Garden Leadership Council. The Garden Leadership Council is under the guidance of the Light of Christ Governing Board and the Voters of the Congregation.

Aside from the position of Project Manger and Financial Secretary, team and leadership positions may be staffed by persons outside of the Light of Christ Church Congregation. For specifics on Roles, Responsibility and Authority please refer to document, RAA for LOGCG.

Project Scope Exclusions

TBD

Relationship with Other Projects

The LOC Community Garden Project has close ties to the Federal Way Community Gardens Foundation. The project is dependent on the Foundation for access to a Master Gardener, plans for an English Garden, and the coordination of fund raising, volunteers, and distribution of garden produce.

In addition the Foundation will provide a means by which contributions may be made to the Light of Christ Community Garden without making donations directly to the church. This will permit matching funds from companies that do not permit donations to religious institutions.

The Foundation also has developed relationships with the City of Federal Way Government, the Federal Way Mirror and the Lakehaven Utility District. These relationships will provide a significant advantage to the LOC Garden Project in the areas of permitting, communications and cost.

Project Overall Plan

Project Strategy and Approach

Methodology

All positions are unpaid, i.e. volunteer, and except for a few roles such as Project Manager and Financial Secretary, may be staffed from persons outside The Light of Christ congregation. The intent of this project is to bring together various elements of our focus area to work together for a common good in service for others.

While money is crucial to the project it is not intended to be the focus for community involvement. The Garden Project will ask the community to assume a stewardship role for the garden:

- Prayer - for the outreach program and success of the garden
- Time and Talents - Volunteer to become part of the Garden Project
- Support - Spread the word regarding the project, engage others to help complete the garden
- Treasure - Monetary donations, goods and services

Strictly monetary donations are accepted; however the preferred focus is working together. The Garden Project is not authorized to incur debt; therefore project completion may be delayed until sufficient funds have been secured.

There is room for all. The design of the garden as well as the teams used to build and maintain the garden will be inclusive of the community, accommodating physical challenges. Build teams leaders will be working to make sure that all volunteers are actively and productively engaged according to their desires and abilities.

Deliverable Review and Approval Process

A monthly report will be prepared by the Project Manager and submitted to the Garden Leadership Council. This monthly report contains project schedule and build status in relation to build objectives and deadlines. The report also includes a status of finances, issues and challenges. Changes to the plan must be approved by the Garden Leadership Council and the Light of Christ Governing Board.

Quality Control Process

A monthly report of finances will include a summary of donations by group. It is a goal of the Garden Project that no more than 15% of the monetary donations come from an individual group such as the congregation of the Light of Christ Church. The Garden Project cannot incur debt. Building activities are suspended until sufficient funds are obtained to complete the next task or series of dependant tasks.

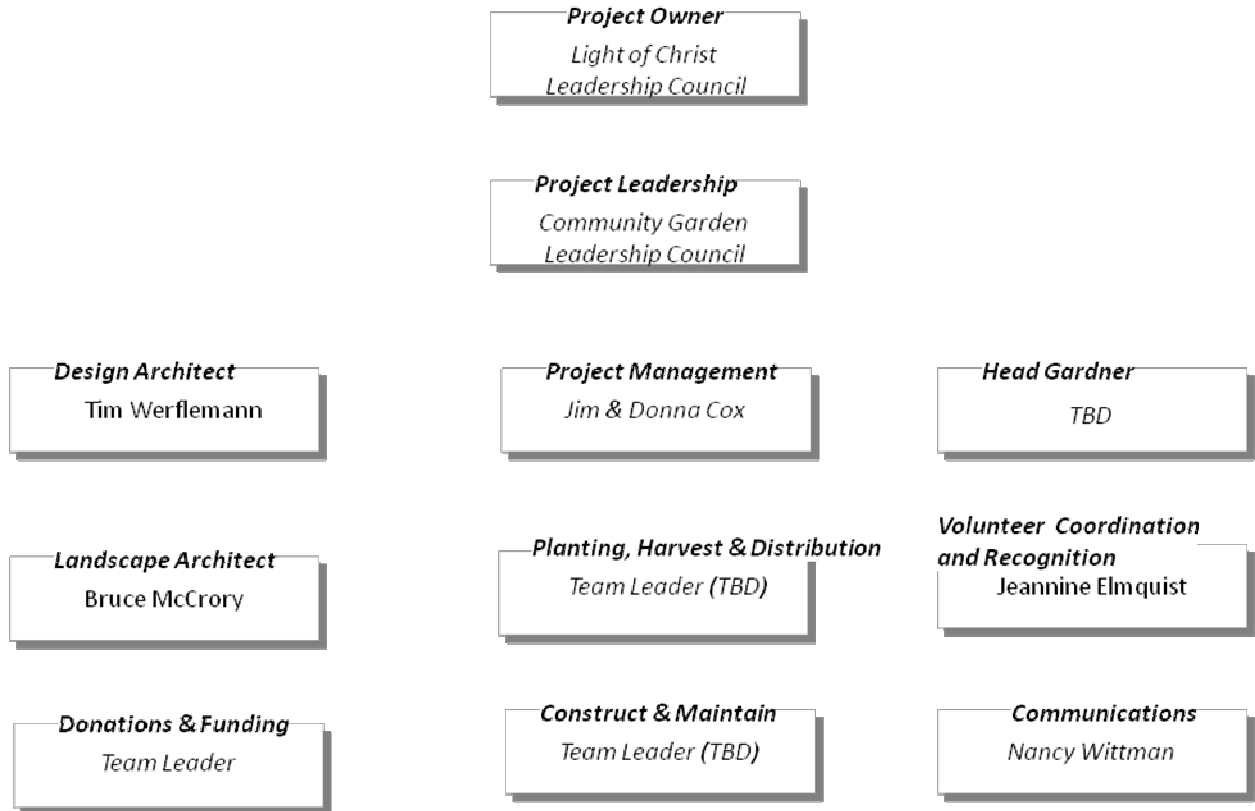
Risk and Issue Management Process

Major issues and challenges are monitored and discussed at the Garden Leadership Council level. Issues that may substantially impeded or affect the cost of the project may be discussed with outside sources such as the FW Community Gardens Foundation for assistance in resolution

Communication and Reporting Process

A monthly report will be prepared by the Project Manager and submitted to the Garden Leadership Council. This report will be available for review by the congregation of Light of Christ Church, The Federal Way Community Gardens Foundation and participating groups / organizations. Communications may be in the form of Web Site updates, printed copy, presentations or a combination thereof.

Project Organization Chart



Roles and Responsibilities

For specifics on Roles, Responsibility and Authority please refer to document, RAA for LOGCG.

Key Resources (External)

Key Resources	
Teri Hickel	Board President Feral Way Garden Foundation
Mike Stanley	Master Gardner, Executive Director Federal Way Gardens Foundation

Project Overall Budget

Summary of Effort (In Work)

	Summary of Effort (person-days / week)				
	Definition & Approval	Engineer & Organize	Build	Plant, Harvest & Maintain	
Project Management	4	3	3	2	
Architecture	3	2	1	.5	
Head Gardner	.5	2	2	3	
Communications	2	2	2	1	
Construction and Build	1	2	4	1	
Volunteer Coordination	2	2	3	.5	
Fund Raising and Finance	2	3	3	.5	
Harvest and Distribution	0	.5	.5	3	
Maintenance	0	0	.5	2	

Summary of Cost (In Work)

Summary of Cost	
Administrative and Communications	
Tools	
Site Preparation & foundation including permits	
Irrigation System	
Bed Build	
Outbuildings including Greenhouse	
Fountain, Arch, Benches, Tables, etc.	
Fencing & Security	
Seeds and Plants	
Harvest and Distribution	
Ongoing Maintenance, including water, electric, etc.	
Grand Total (US Dollars)	\$30,000

Project Overall Schedule

Overall Schedule (In Development)

Major Milestones

Major Milestones	Date
Milestone 1 Preliminary design and approval complete	Date 6/11/2011
Milestone 2 Groundbreaking and project kickoff	Date 8/2011
Milestone 3 Preliminary build complete – winter shutdown	Date 10/21/2011
Milestone 4 First Planting	Date 4/1/2012
Milestone 5 First Harvest	Date 5/20/2012